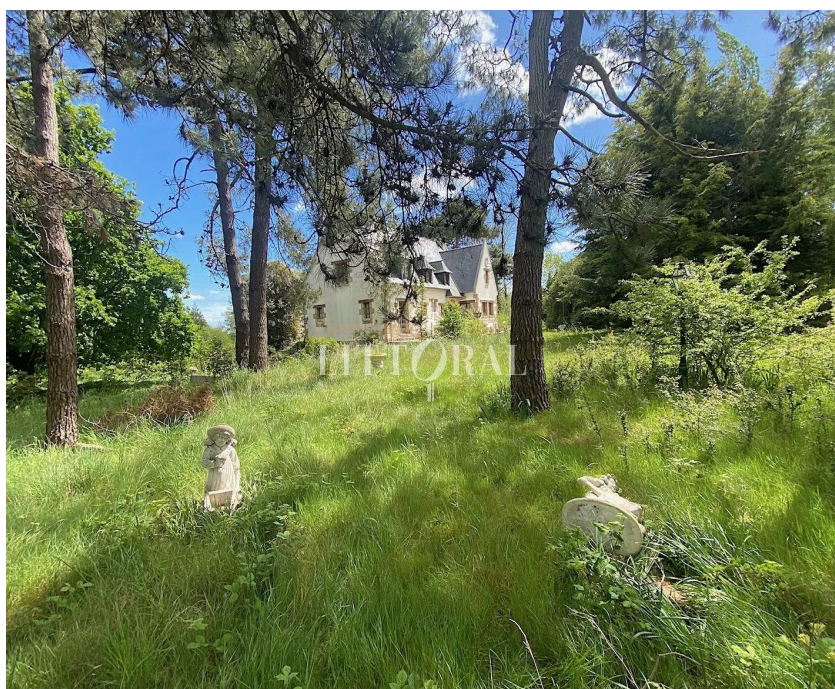


L'exception a un nom

Propriété sur 2ha de pinède et jardin à quelques centaines c



réf. CPG098

area : 200 m²

ground : 22394 m²

number of pieces : 7

discover this architect's house with a unique style imagined by the architects of the atelier from here in brest and built in 2020-2021 in the countryside near the sea. upon entering this property of 2300m² of land, you will see a structure of 295m² of living space spread over two levels and its 125m² garage. on the ground floor you will find a beautiful entrance which gives access to both the living room of 75m² but also to the toilets and the garage. on the living room side, a fitted and equipped kitchen and its back kitchen, in continuity a dining room and the living room. the whole is very cozy and bright, the style is contemporary and everything is carefully ..

You Advisor

Thierry LEFEUVRE

06 32 38 58 02

thierry@demeuresdulittoral.com